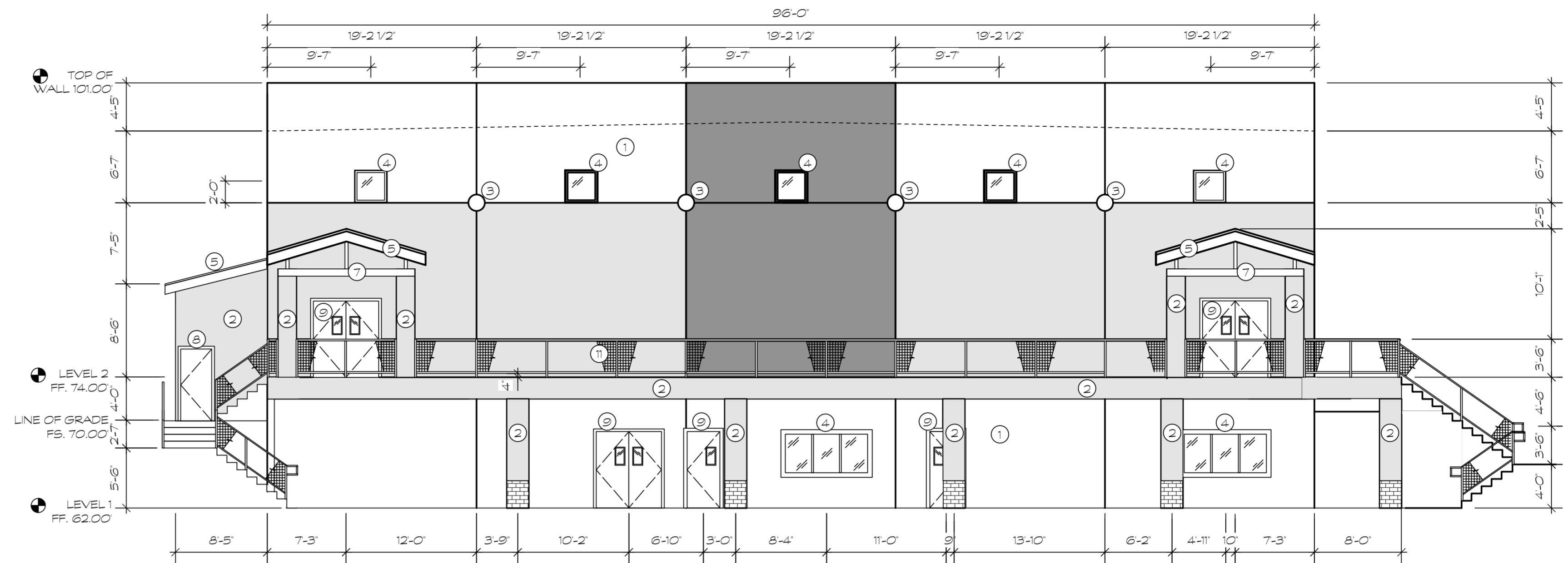
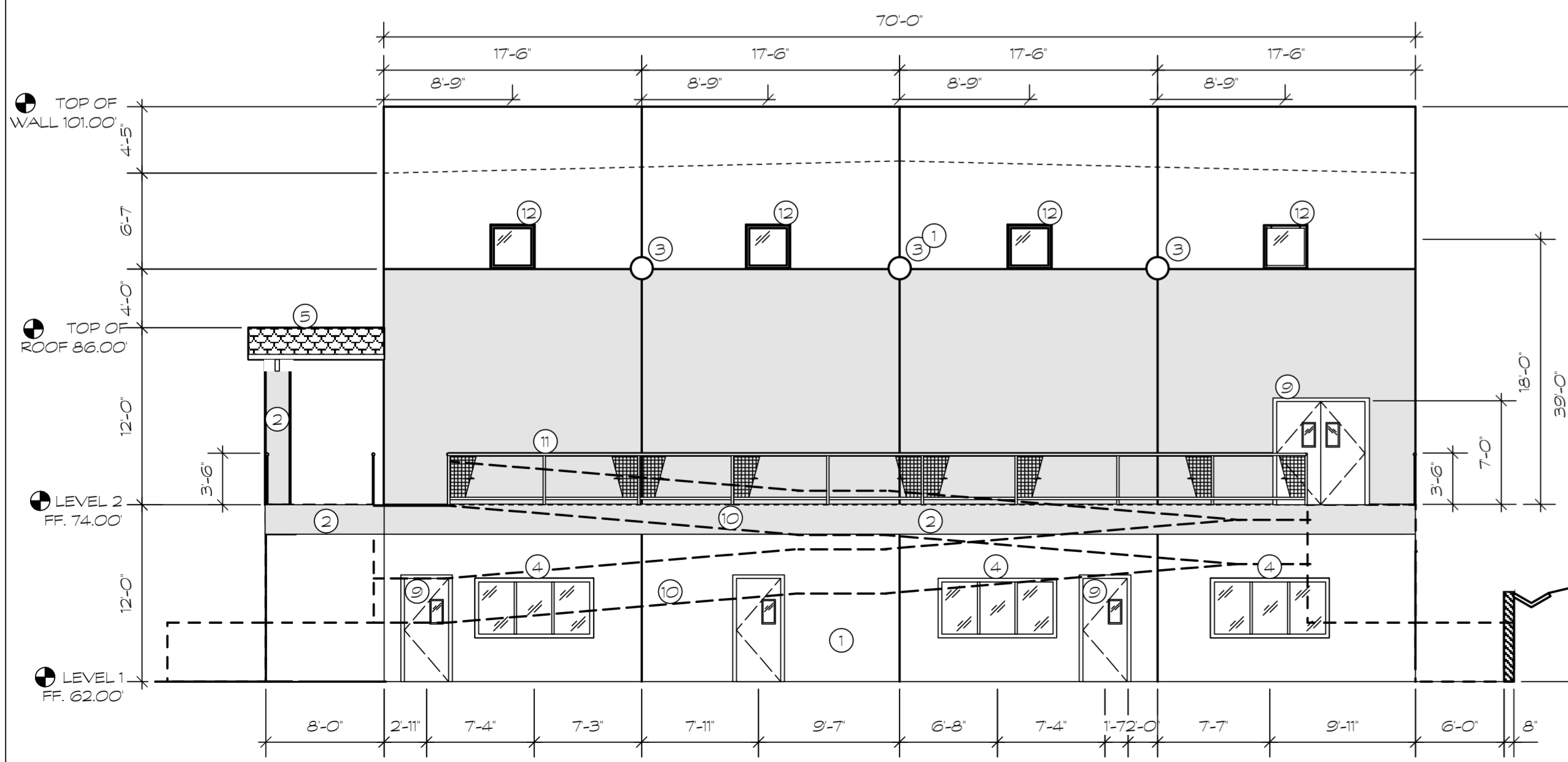


4 SOUTH ELEVATION
SCALE 1/8"=1'

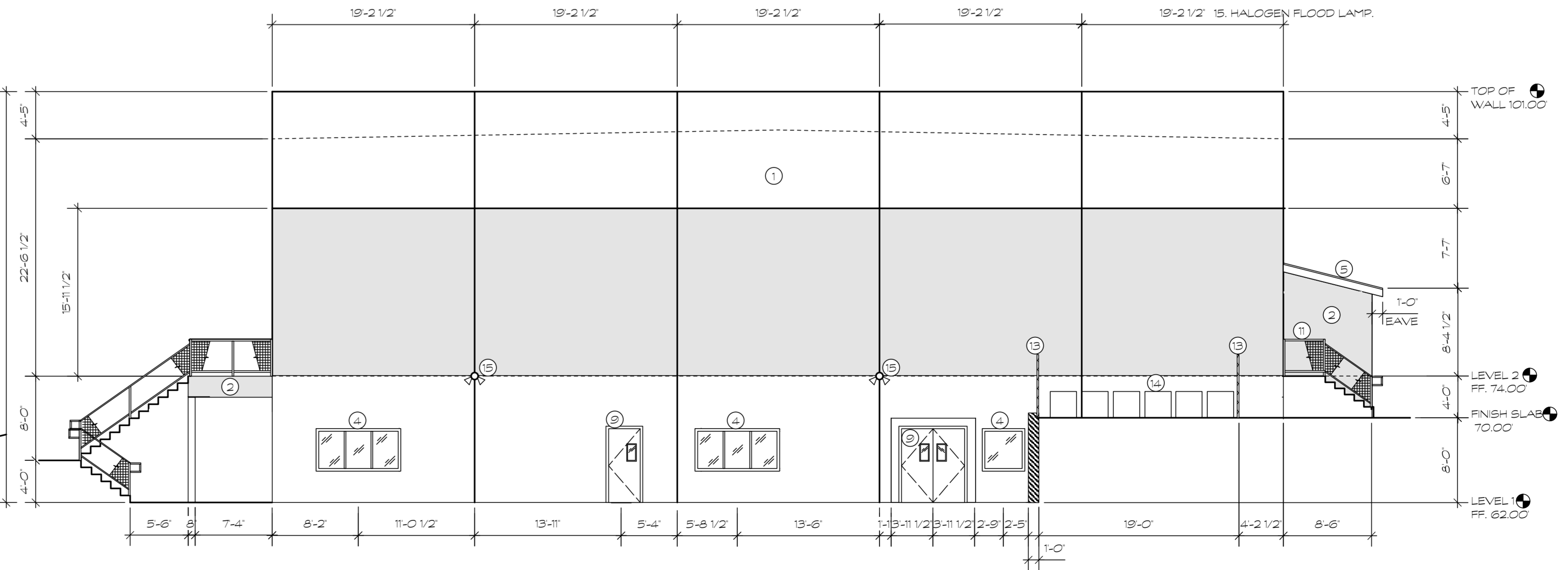


2 EAST ELEVATION
SCALE 1/8"=1'

- MATERIAL LEGEND**
ALL COLORS TO MATCH EXISTING BUILDINGS
- 1. TILT-UP CONCRETE PANEL-PAINTED TO MATCH MERLEX P-12
 - 2. SMOOTH TROWEL STUCCO OR EIFS TO MATCH MERLEX P-539
 - 3. (N) EXTERIOR LIGHT
 - 4. CLEAR ANODIZED ALUMINUM STORE FRONT GLASS TO MATCH EXISTING
 - 5. CONCRETE ROOF TILE TO MATCH EXISTING- MONIER LIFETILE DESERT TERRA COTTA #8101
 - 6. SPLIT FACE BLOCK- ORCO BUFF TO MATCH (E)
 - 7. EXPOSED WOOD FRAMING-STAINED OLYMPIC CHOCOLATE TO MATCH (E)
 - 8. SOLID CORE METAL DOOR-PAINTED TO MATCH WALL W/ CLOSURE
 - 9. STOREFRONT DOOR-MEDIUM STILE CLEAR ANODIZED ALUMINUM WITH CLEAR TEMPERED GLASS
 - 10. LINE OF NEW HANDICAP RAMP
 - 11. (N) 42" GUARDRAIL TO MATCH (E)
 - 12. (N) WALL DETAIL
 - 13. (N) 6 CHAINLINK FENCE
 - 14. (N) AC UNITS
 - 15. HALOGEN FLOOD LAMP



3 NORTH ELEVATION
SCALE 1/8"=1'



1 WEST ELEVATION
SCALE 1/8"=1'

DESIGNER
DESIGN INTERVENTION, INC.
1590 SOUTH COAST HWY. SUITE 111
LAGUNA BEACH, CA 92651
FAX (949) 376-5358 PH (949) 376-5359
DESIGNINTER.COM

OWNER
ALISO VIEJO CHRISTIAN SCHOOL
1 ORION
ALISO VIEJO, CA 92680

ELEVATIONS

DESCRIPTION

OWNERSHIP AND USE OF DOCUMENTS

All drawings, specifications and issues thereof furnished by Design Intervention are and shall remain the property of Design Intervention and shall not be reproduced, stored in a retrieval system, or transmitted in any form or by any means, electronic, mechanical, photocopying, recording, or by any information storage and retrieval system, without the prior written consent of Design Intervention.

DRAWING NO.

A-4.0

PROJECT NO.

2628.00

SCALE

1/8"=1'

SHEET OF